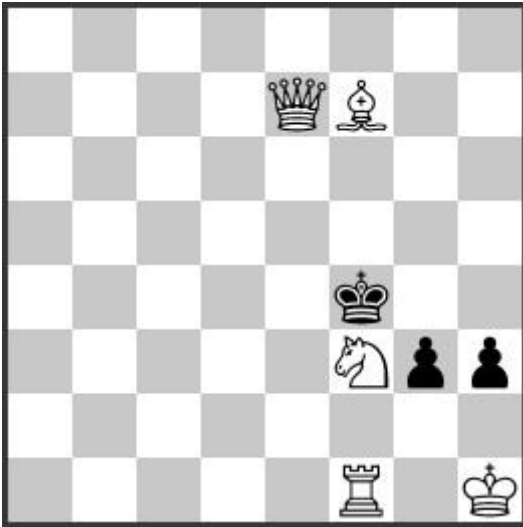


Marcin Banaszek
Polish Chess Federation 03/2025
Section Selfmates in 3-6 moves



S#6 **5+3** **C+**

FEN: 8/4QB2/8/8/5k2/5Npp/8/5R1K

a) diagram **b) bBf7>d5** **c)=b) bSf1** **d)=c) bBd5>f7**

Selfmates in 6 moves

- a) 1. Qg5+! Ke4 2. Qg4+ Kd3 3. Qc4+ Ke3 4. Qd4+ Ke2 5. Qd2+ K:f1 6. Qg2+ h:g2#**
- b) 1. Qf6+! Kg4 2. Be6+ Kh5 3. Bf7+ Kg4 4. S3h2+ g:h2 5. Rf2! Kg3 6. Rg2+ h:g2#**
- c) 1. Qf7+! Kg4 2. S1h2+ g:h2 3. Be6+ Kg3 4. Se1! Kh4 5. Qf5! Kg3 6. Sg2! h:g2#**
- d) 1. Qe5+! K:f3 2. Bh5+ Kf2 3. Qe3+ K:f1 4. Be2+ Ke1 5. Bf3+ Kf1 6. Bg2+ h:g2#**

White forces black to checkmate the white king on the same square (g2) with four different white pieces (QRSB) in the form of four optimally formed twins, with very economical material (8 pieces). Four model mates in two different mate nets. Four different plays, mostly forced, due to the free black pawns. All white moves are different, with one exception (Be6+). The black king makes 18 moves on 14 different squares. Each key is made by the same piece (white Queen), emphasising the uniformity of the idea. Each twin position is created successively, i.e. by one change from the previous position. Practically from each twin position, four regular twin sequences can be created, which confirms the strong consistency of the problem.

Change of forcing mate on one square (4x), model mates (4x), various mate nets (2x), checking key by the same piece (Qx4), 6 moves with one piece in one variation (Q), threefold switchback of the black King, creation and play of a battery (1x), sacrifices of white pieces (active 6x, passive 3x).